

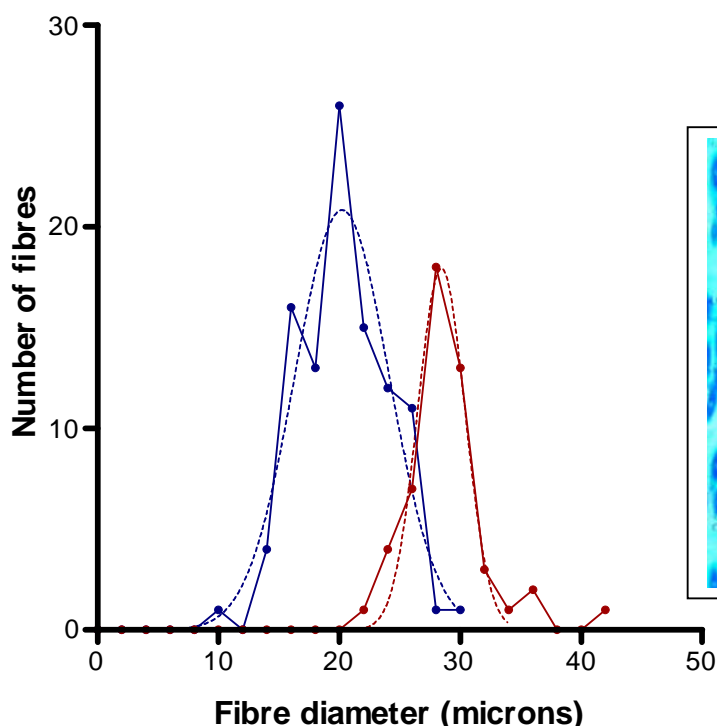
Benleigh Sancho ET IAR 111353
24 months old light fawn Huacaya alpaca male
 Sire: Jolimont Warrior Dam: Benleigh Sweet Caroline

Register no: JW1287

DENSITY:		LENGTH:	
Mean fibre diameter (microns)	20.6	Crimps per cm	
Secondary follicle to primary follicle ratio	10.4	Fibre growth rate (mm per day)	
Follicle density (per mm ²)	70.2	Fibre length to staple length ratio	
SKIN THICKNESS (mm compressed):	1.68	CYLINDRICAL FIBRES (%):	

DIAMETER DISTRIBUTION OF PRIMARY AND SECONDARY FIBRES

	PRIMARY FIBRES	SECONDARY FIBRES
Mean (µm)	28.4	19.9
SD (µm)	3.2	3.5
CV (%)	11.5	17.9
Min (µm)	22.0	9.0
Max (µm)	41.0	29.0
Medullation (%)	100%	53%
Pigmented (%)		



The follicle groups are small and contain high numbers of follicles. Hence the density is very high. The primary fibres and secondary are fine and uniform in diameter.

Skin and fleece tests conducted by Dr. J. E. Watts M.V.Sc., Ph.D.

27 May 2008